

Installation Guide



FCC Declaration of Conformance

This device complies with part 15 of the FCC Rules. Operation is subject to the following two conditions: (1) this device may not cause harmful interference, and (2) this device must accept any interference received including interference that may cause undesired operation.

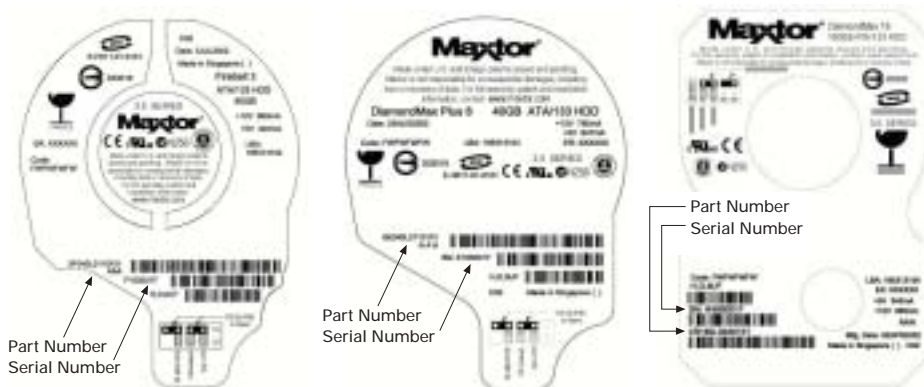
Contents

Warranty Registration Information	1
Introduction	2
Precautions	2
Included in this Kit	2
Required Tools	3
About Serial ATA	3
Back Up Your Data	3
Installing the Drive in a Macintosh	3
Remove System Cover	4
Mount the Hard Drive	5
Attach Serial ATA and Power Cables	7
Check BIOS Message	9
Format the Hard Drive	10
Set the Boot Sequence	15
Getting Help	16

Warranty Registration Information

Before installing the hard drive, please write down the 8 character serial number and the 14 digit part number information. If you ever need to contact Maxtor Support, you must provide this information about your hard drive prior to assistance.

Several hard drive models are illustrated below to help you identify where these numbers are located. Use the drawing that looks like your hard drive, then locate the part and serial numbers from your hard drive and write these numbers in the space provided.



Part Number (P/N): _____ Serial Number (S/N): _____



Maxtor Serial ATA
(SATA) Hard Drive



SATA Interface
Cable



MaxBlast® CD



Mounting Screws



This Installation
Guide

Figure 1
Included in this Kit

Introduction

Thank you for selecting a Maxtor hard drive product. This guide will lead you through the installation of your new drive.

If you encounter any difficulties with installation, please visit us online at **www.maxtor.com** and click on Worldwide Support.

The Maxtor SATA Hard Drive Kit includes the components shown in Figure 1. Your computer may need some or all of these parts to complete the installation. You will also need the tools shown in Figure 2 on page 3 to install the hard drive in your computer.

Precautions



Drive should be at room temperature before installing.



Do not touch circuit board on drive.



Unplug system from electrical outlet before connecting cables to drive or motherboard.



Do not drop, bump, or jar drive.

About Serial ATA

Serial ATA (SATA) technology offers you the following benefits:

- World's fastest ATA interface
- Ideal for high-performance RAID
- Thin, easy-plug cables for improved airflow
- Simple, no-jumper installation

Unlike standard ATA drives, Serial ATA drives do not require the use of jumpers to configure the drive.

Visit www.maxtor.com and click on Worldwide Support for the latest SATA information and software updates.

Back Up Your Data

Protect your data by backing up existing hard drives before installing your new Maxtor hard drive.

Installing the Drive in a Macintosh



For detailed information on mounting an internal drive in your Macintosh, go to www.apple.com/support. Once you have mounted the drive, you can format (initialize) and partition the drive using the Apple's Drive Setup utility (for Mac OS 8.6 or higher) or Disk Utility (for Mac OS X). Note that on all beige Power Mac G3 systems (Desktop, Minitower, All-In-One), Mac OS X can only be installed in a partition that is within the first 8 GB of the drive.



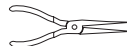
System User Manual



Operating System
CD and Boot Disk



Philips Screwdriver



Small Needle-Nose Pliers

Figure 2
Required Tools

Remove System Cover

1. Turn your computer off.
2. Unplug your system from the electrical outlet.
3. Remove the cover from your system case. See Figure 3.

Refer to your system user manual for instructions on removing the cover, or obtain the services of a qualified installation technician.

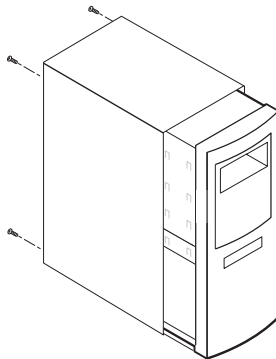


Figure 3
Removing the System Cover

4. Attach a grounding strap or touch a metal portion of your computer case. This will ground you to minimize the risk of exposing the hard drive to electrostatic discharge.

Mount the Hard Drive

Before mounting the hard drive in your system, determine whether you are installing the hard drive in a 3.5-inch or 5.25-inch device bay. If you are unable to locate an available device bay, consult your system manual or system manufacturer.

3.5-inch Device Bay Installation

Many systems have an available 3.5-inch bay located adjacent to the floppy drive.

- Mount the hard drive in the 3.5-inch bay using the screws provided. See Figure 4.

Some systems may not have enough room to plug in the cables after the hard drive is mounted. You may need to attach the SATA and power supply cables first.

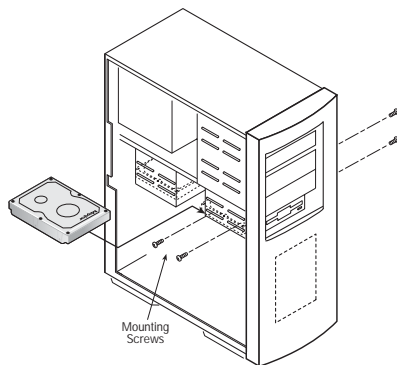


Figure 4
Typical 3.5-inch Device Bay Installation

5.25-inch Device Bay Installation

When installing the hard drive in a 5.25-inch bay (such as where CD-ROM drives are typically installed), you first need to attach mounting brackets (not included) to the hard drive. Mounting brackets are available from your local computer hardware store.

1. Attach the mounting brackets to the hard drive using the screws included with this kit. See Figure 5 for details.

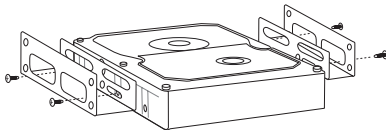


Figure 5
Mounting the Brackets on the Hard Drive

2. Mount the hard drive in the 5.25-inch bay using the screws provided with the mounting brackets. Position the hard drive as close to the bottom of the device bay as possible with the label facing up.

Attach Serial ATA and Power Cables

1. Locate an available Serial ATA (SATA) port on your motherboard or on a SATA PCI card and plug in one end of the SATA interface cable.
2. Locate the SATA port on the rear of the hard drive and plug in the SATA interface cable as shown.
3. Your Serial ATA drive may be equipped with two power connectors. You can use either the 15 pin SATA or the 4-pin legacy power connector. These connectors cannot be used at the same time; powering both connectors simultaneously will damage the drive.

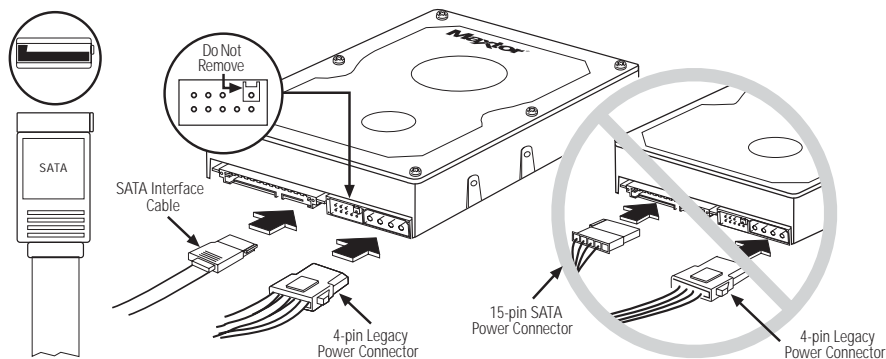


Figure 6a
Attaching the Cables to the Hard Drive



If you have an existing installation of Windows 2000 or XP, you must install a Windows driver for the SATA interface before connecting the drive. See “Format the Hard Drive” on page 10 for details.



To ensure proper operation of your drive, do not use the jumper pins to the left of the 4-pin power connector (Figure 6a). If your drive comes with a jumper pre-installed, carefully remove it using needle-nose pliers. If your drive has a single shrouded jumper pin (see Figure 6a or 6b), please note that the plastic shroud is fixed in place. Do not attempt to remove it.

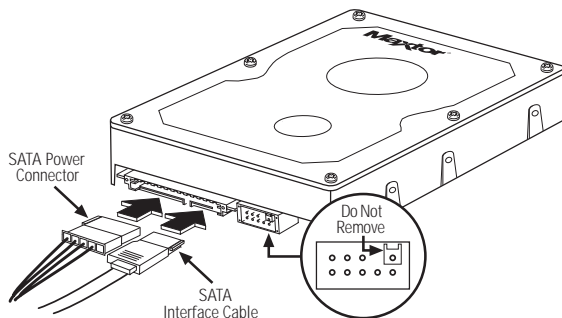


Figure 6b
Attaching the Cables to the Hard Drive

Check BIOS Message

If you have a motherboard with built-in SATA ports, power on your system and look for an on-screen BIOS message that refers to the SATA interface or controller. (See Figure 7.) This message indicates that the SATA interface on your motherboard is enabled. If you do not see this message, consult the documentation supplied with your motherboard or system to enable SATA support in the system BIOS.

If you are using a SATA PCI card, there is no need to enter BIOS Setup to enable SATA support. The card will automatically enable SATA support after the system BIOS has loaded.



Figure 7
Typical SATA BIOS Message

Format the Hard Drive

This chapter describes how to partition and format your new drive using the MaxBlast installation software on a Windows system. Maxtor recommends using MaxBlast on 98 and ME systems, rather than FDISK, to partition and format the drive.

If you have not previously installed a SATA drive in your system, you must install a Windows driver for your SATA PCI card or SATA-enabled motherboard or system so that Windows can recognize your new drive. For maximum compatibility, Maxtor recommends downloading and installing the latest SATA driver from the website of the SATA card/motherboard/system manufacturer. The latest SATA drivers for Maxtor-branded SATA cards can be downloaded from the Worldwide Support section at www.maxtor.com.

Choose from one of the following installation scenarios:

- A. Existing Windows 98 or Me system
- B. Existing Windows 2000 or XP system
- C. New Windows 98 or Me system or replacing a failed 98 or Me boot drive
- D. New Windows 2000 or XP system or replacing a failed 2000 or XP boot drive

Special notes for installation scenarios C and D:



The DOS version of MaxBlast does not currently support USB mouse or keyboard input unless supported by your system BIOS. If you have a USB keyboard and/or mouse, you may need to connect a PS/2 mouse or keyboard to your system temporarily to navigate through the program. MaxBlast for DOS can be operated from the keyboard using the Tab, Enter/Return, and arrow keys.



To boot from the MaxBlast CD, you may need to change the boot sequence or boot order settings in your system BIOS to "Floppy > CDROM > IDE-0" or "A, CDROM, C." Depending on your BIOS type (AMI, Award, Phoenix), the boot sequence settings may be located on the main setup screen or under the BIOS FEATURES SETUP or ADVANCED CMOS SETUP menus.



If your system cannot boot from a CD, you can create a bootable MaxBlast diskette by inserting the MaxBlast CD into a system running Windows and choosing Create MaxBlast Installation Diskette from the menu. If you have dual optical (CD/DVD) drives, try booting from the other optical drive.

A. Existing Windows 98 or Me System

1. Boot the system into Windows.
2. The Add New Hardware Wizard will appear informing you that it has found a new PCI mass storage controller. Follow the SATA card/motherboard/system manufacturer's instructions for installing the driver for the SATA controller.
3. From the Windows desktop, insert the MaxBlast CD and install MaxBlast for Windows.
4. Follow the on-screen prompts to step through the installation process. Choose whether to install the drive as additional storage or as the new boot drive.
5. Depending on your selection, do one of the following:
 - a. Additional storage install: After the drive has been set up as additional storage, double-click the My Computer icon. A new drive letter and icon should appear. The new drive is ready to use.
 - b. Boot drive install: When MaxBlast has finished copying data to your new drive, eject any CDs or floppies and perform a normal shutdown. Continue to "Set the Boot Sequence (New boot drive only)" on page 15.

B. Existing Windows 2000 or XP System



The driver for the SATA interface must be installed prior to connecting the hard drive. If you are using a SATA card, you should physically install it at this time, but do not connect the drive.

1. Boot the system into Windows.
2. Follow the SATA card/motherboard/system manufacturer's instructions for installing the SATA driver.
3. Shut down your system, connect the hard drive, and boot into Windows.
4. From the Windows desktop, insert the MaxBlast CD and install MaxBlast for Windows.
5. Follow the on-screen prompts to step through the installation process. Choose whether to install the drive as additional storage or as the new boot drive.
6. Depending on your selection, do one of the following:
 - a. Additional storage install: After the drive has been set up as additional storage, double-click the My Computer icon. A new drive letter and icon should appear. The new drive is ready to use.
 - b. Boot drive install: When MaxBlast has finished copying data to your new drive, eject any CDs or floppies and perform a normal shutdown. Continue to "Set the Boot Sequence (New boot drive only)" on page 15.

C. New Windows 98 or Me System or Replacing a Failed 98 or Me Boot Drive

1. Boot your system from the MaxBlast CD.
2. When MaxBlast asks if you would like to prepare the drive for use in your system, click Yes and follow the on-screen prompts to format and partition your drive.
3. When finished partitioning and formatting the hard drive, eject all CDs or floppy disks and restart the system.
4. Boot your system from your Windows system boot floppy.
5. When prompted to start the computer with CD-ROM support, select this option so that Windows will load the CD-ROM driver. After the system boot floppy finishes loading, you should see the A:\ prompt. Above the prompt, you should also see a line saying Drive X = Driver MSCD001 unit 0 where X is the drive letter assigned to the CD-ROM drive. Depending on how many devices are connected to the ATA/IDE cables, the assigned CD-ROM drive letter could be E, F, G, etc.
6. Note the CD-ROM drive letter, and insert your Windows CD in the CD-ROM drive.
7. At the A:\ prompt, type X: (where X is the CD-ROM drive letter) and press Enter.
8. At the X:\ prompt, type SETUP and press Enter. Follow the on-screen instructions to install Windows.
9. The Windows installer will detect the SATA interface as a PCI mass storage controller near the end of the installation process. You will need to provide the drivers for the SATA card at this time.
10. Complete the Windows installation process, then continue to "Set the Boot Sequence (New boot drive only)" on page 15.

D. New Windows 2000 or XP System or Replacing a Failed 2000 or XP Boot Drive



Before you begin. The SATA host driver for motherboards with embedded SATA controllers, or non Maxtor branded SATA hosts, are typically contained on an installation CD that is included with the motherboard or add-in controller. The SATA host drivers must first be extracted to a floppy disk before installing the operating system. Drivers for Maxtor-branded SATA cards can be downloaded from the Worldwide Support section at www.maxtor.com or extracted to floppy from the bootable MaxBlast CD. Boot your system from the MaxBlast CD.

1. Boot your system from your Windows installation CD. If you have trouble booting to the Windows XP CD, see Maxtor Knowledge Base Article #855 at www.maxtor.com.
2. When prompted by the Windows installer to install a third-party SCSI or RAID driver, press the F6 key then S when prompted, to specify additional devices.
3. Insert the SATA driver floppy and press Enter.
4. Follow the on-screen prompts to finish installing Windows, then continue to "Set the Boot Sequence (New boot drive only)" on page 15.

Set the Boot Sequence (New boot drive only)

The final step is to configure your system BIOS to use your SATA drive as the system boot drive. Your system has a built-in BIOS Setup utility that allows you to change this setting.

1. Power on the system and look for an on-screen message indicating which function key to press to enter Setup. (See Figure 7.) The function keys used for entering Setup vary between manufacturers. The most common Setup function keys are F1, F2, and DEL.

Refer to your system manual for specific information about your system BIOS.



On some newer systems, the function key message for entering Setup disappears before you get a chance to read the screen. Also, some monitors are slow to display text when powering up the system, so you may need to restart your computer to read the message. To make it easier to read the function key message, press the Pause/Break key after the memory count to pause the boot process. The Pause/Break key is usually located in the upper right corner of your keyboard (see Figure 8). Press the Enter key to resume system boot.

2. Immediately after the function key message appears, press the indicated key to enter Setup. Within the Setup utility, navigation is limited to keyboard commands. Keyboard instructions are usually located somewhere on the Setup screen.
3. Configure the Boot Sequence or Boot Order setting so that the SATA drive or interface is detected first. This will enable the SATA drive to be used as the boot drive.
4. Save the settings, exit Setup, and reboot your system.



On some newer systems, you may be able to set the boot order of individual SATA drives in BIOS Setup.

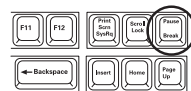


Figure 8
Pause/Break Key
on a Keyboard

Getting Help

Before contacting Maxtor Support, use the Hard Disk Information feature in MaxBlast to view the model number and serial number of your drive. These numbers can be used to get help from Maxtor Support, register your drive, and look up information on the Maxtor website.

Please visit **www.maxtor.com** to obtain comprehensive support information, such as:

- **Warranty Services**
Drive Returns (RMA), Warranty Status, Limited Warranty Statement
- **Product Support**
Installation Tutorial, Specifications, Jumper Settings, Installation Guides, Product Manuals
- **Software Downloads**
Installation Software, Utilities, Diagnostics
- **Knowledge Base**
Troubleshooting information, FAQs, resolved problem database
- **Product Index**
Current and Legacy Maxtor product's listing

Click on Support to access the Knowledge Base, download software updates, register your drive, and get assistance via e-mail.



Copyright © 2004 Maxtor Corporation. All rights reserved. Changes are periodically made to the information herein which will be incorporated in revised editions of this publication. Maxtor may make changes or improvements to the product(s) described in this publication at any time and without notice. For purposes of storage capacity, a gigabyte (GB) equals 1,000,000,000 bytes. Total accessible capacity varies depending on operating environment. MaxBlast, Maxtor, and the Maxtor stylized logo are registered trademarks of Maxtor Corporation. All other brands or products are trademarks or registered trademarks of their respective holders. Maxtor Corporation, 500 McCarthy Blvd., Milpitas, California, 95035.

P/N: 20255100